



Welcome to Stage 2
2024
Meet the Teacher

Eastwood Heights Public School

Acknowledgement of Country



Acknowledgement of Country

We acknowledge the Traditional Custodians of country throughout Australia and their connections to land, sea and community.

We pay our respect to their Elders past and present and extend that respect to all Aboriginal and Torres Strait Islander peoples today.



2024 Stage 2 Staff Members

Ms Nerys Hull – Stage 2 AP and Year 4
teacher

Mrs Shina Anjiri – Year 4 teacher

Ms Carly Kyle – Year 3 teacher

Mrs Helen Galati – Year 3 teacher

Miss Peyton Kelly – Year 3 teacher

APCI - Mrs Ada Chan

<https://docs.google.com/presentation/d/1l-AygQkW1tX6krDNwk6uU-htnn7KXlpqNiGJqiRpQKo/edit?usp=sharing>

Curriculum

Syllabuses for learning

NESA develops syllabuses for these learning areas:

- English
- Mathematics
- Science and Technology
- Human Society and Its Environment (HSIE) (History and Geography)
- Creative Arts
- Personal Development, Health and Physical Education (PDHPE)

Parent Guide to the NSW Primary Syllabuses

<https://educationstandards.nsw.edu.au/wps/wcm/connect/25cb2fe5-c5f4-4ce8-920c-6b4b108bb30a/parent-guide-to-the-primary-syllabuses.pdf?MOD=AJPERES&CVID=>

New English and Mathematics Curriculum

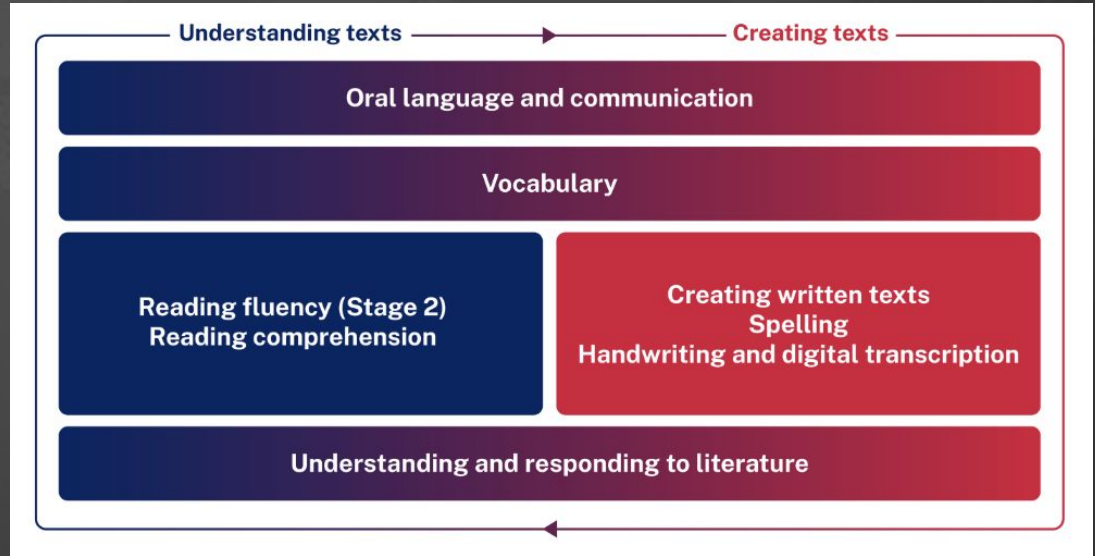
The new curriculum, as a result of the NSW Curriculum Reform, will give students more time to focus on **key learning areas** so that they can acquire a deeper understanding of **central concepts**. It will ensure students develop strong foundations for learning, life and work in a complex and fast-changing world.

Our teaching and learning programs are designed with the needs of your child at the core. Programs are adapted to cater for the needs of each student in the class. We use a range of high-quality resources to deliver the teaching and learning.

3-6 Focus Areas - English

The focus areas for each stage support students' growing knowledge and understanding of English in the areas of:

- Oral language and communication
- Vocabulary
- Reading fluency
- Reading comprehension
- Creating written texts
- Spelling
- Handwriting and digital transcription (typing/word processing)
- Understanding and responding to literature



3-6 Focus Areas - English



NSW Curriculum

NSW Education Standards Authority

Making connections in English 3-6

Syllabus concepts are often interrelated, or their development may be interdependent. These connections are suggested and not an exhaustive list.

This **Stage 2** content can be addressed in parallel with:

	Oral language and communication	Vocabulary	Reading fluency	Reading comprehension	Creating written texts	Spelling	Handwriting and digital transcription	Understanding and responding to literature
Oral language and communication		✓	✓	✓	✓		✓	✓
Vocabulary	✓		✓	✓	✓	✓		✓
Reading fluency	✓	✓		✓				✓
Reading comprehension	✓	✓	✓		✓	✓		✓
Creating written texts	✓	✓		✓		✓	✓	✓
Spelling		✓		✓	✓		✓	
Handwriting and digital transcription	✓				✓	✓		✓
Understanding and responding to literature	✓	✓	✓	✓	✓		✓	

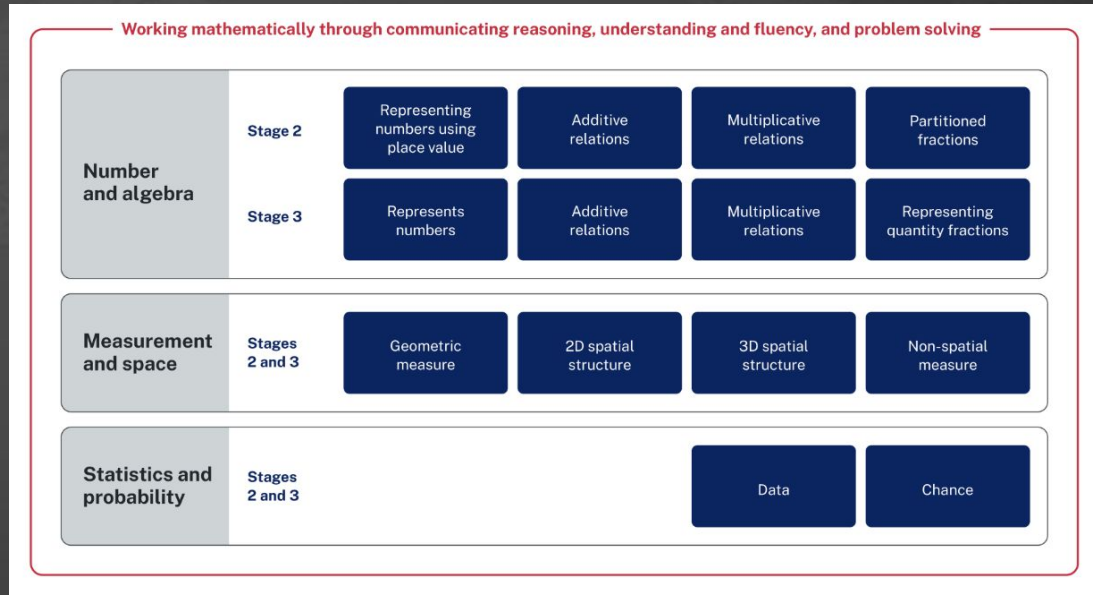
3-6 Focus Areas - Mathematics

The focus areas for each stage support students' growing knowledge and understanding of Mathematics in the areas of:

- Number and Algebra
- Measurement and Space
- Statistics and Probability

Working mathematically plays an important role across all areas of mathematics and reflects the connections between concepts.

- communicating
- understanding and fluency
- reasoning
- problem solving.



3-6 Focus Areas - Mathematics



NSW Curriculum
NSW Education Standards Authority

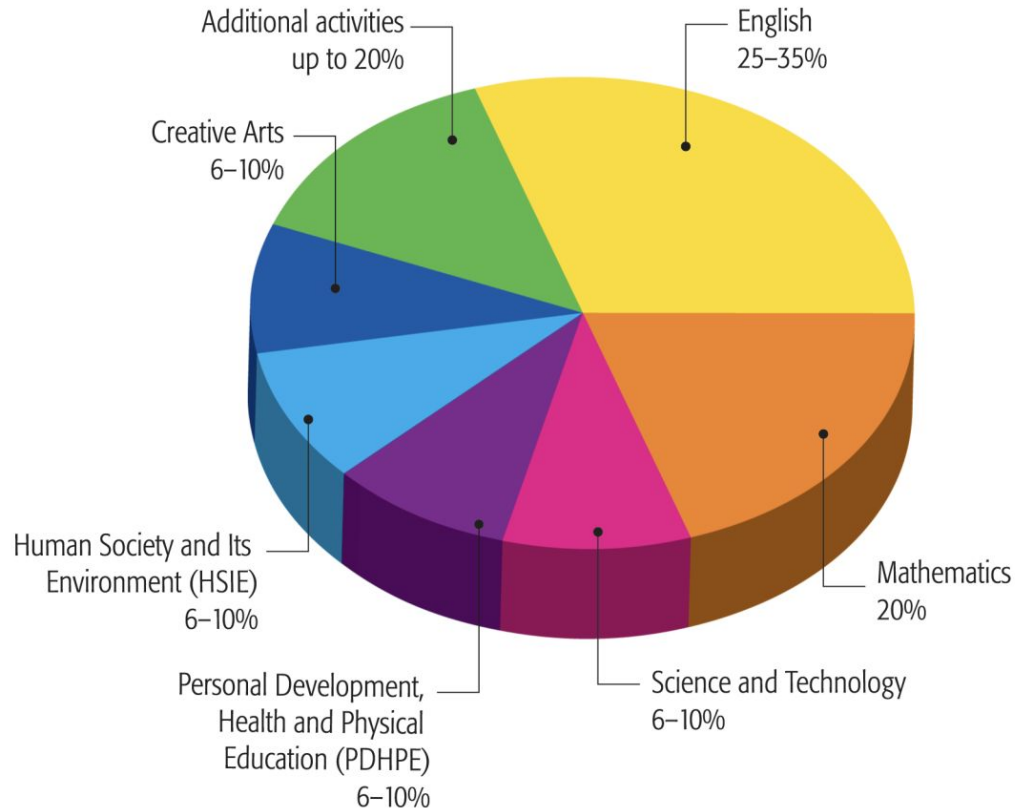
Making connections in Mathematics 3–6

Syllabus concepts are often interrelated or their development may be interdependent. These connections are suggested and not an exhaustive list.

This **Stage 2** content can be addressed in parallel with:

	Representing numbers using place value	Additive relations	Multiplicative relations	Partitioned fractions	Geometric measure	Two-dimensional spatial structure	Three-dimensional spatial structure	Non-spatial measure	Data	Chance
Representing numbers using place value		✓	✓	✓	✓			✓	✓	
Additive relations	✓				✓					
Multiplicative relations	✓				✓	✓	✓			
Partitioned fractions	✓				✓			✓		
Geometric measure	✓	✓	✓	✓		✓	✓	✓	✓	
Two-dimensional spatial structure			✓		✓		✓			
Three-dimensional spatial structure			✓		✓	✓				
Non-spatial measure	✓			✓	✓					
Data	✓				✓					✓
Chance								✓		

How much time will be spent on each subject?



English and Mathematics Parent and Carer Guides

A parent and carer guide to supporting your child in English 3-6

<https://drive.google.com/file/d/1nZZkThAiusDAzb0H1iuZrFyFTRO2WH-0/view?usp=sharing>

A parent and carer guide to supporting your child in Mathematics 3-6

https://drive.google.com/file/d/14aqZqq8ltgCwnwevugFkOC3CAIwi_puB/view?usp=sharing

Science and Technology

Science Content focus:

Stage 2 of the Earth and Space strand focuses on the Earth's surface and how it changes over time. Students investigate natural processes and human activity in order to develop a view in relation to sustainable practices. Students explore the effect of the interactions between the Earth and the Sun.

Digital Technologies focus:

Stage 2 of the Digital Technologies strand focuses on digital systems and how they transmit data.

History - Community and Remembrance



Students will develop an understanding of the local Aboriginal heritage and the significance of Country/Place to Aboriginal and Torres Strait Islander Peoples. Students will investigate their local community to learn about past developments, events and people which have shaped and influenced their community. The diversity of a community is consolidated through studying different celebrations and commemorations we hold in Australia and how these compare with other celebrations and commemorations around the world.

Library

Ms Argyle will be teaching a component of our History program during the weekly library lessons.

Students will explore how a ceremony, like the Welcome to Country (smoking ceremony), plays part in the Indigenous and non-indigenous experience.

Students will research ceremonies and practices.

To demonstrate their understanding, they will plan, write and publish a detailed digital report about a ceremony, which they will then present to the class or a small group.

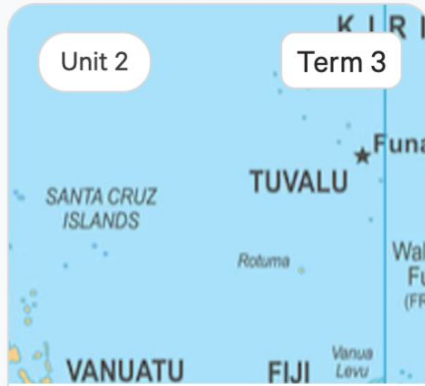
Geography - Places are Similar and Different



Unit 1

Term 3

**The Australian
Continent**



Unit 2

Term 3

Australia's Neighbours

4 Lessons



Unit 3

Term 3

Climate of Places

3 Lessons



Unit 4

Term 3

**Similarities and
Differences Between...**

Students will learn about different climate zones within Australia and compare those to our neighbouring countries. They will evaluate the impact of climate on settlement patterns and how it influences the daily lives of the people who live there. Students will consider how feelings and perceptions for a special place influence the actions of a community to protect the environment. A guided self-inquiry of a local place develops student's geographical skills in collecting and interpreting data and drawing maps using cartographic conventions.

Creative Arts

Visual Arts: Students make artworks that represent a variety of subject matter and make choices about the forms and techniques used.



Music: Students sing, play and move to music, demonstrating a basic understanding of musical concepts.



Dance: Students perform dances demonstrating a range of performance qualities and increasingly complex movement skills.



Drama: Students experience and interpret a range of drama forms and elements by making, performing and appreciating drama.



PDHPE

Students develop the knowledge, skills and attitudes needed to lead healthy, active and fulfilling lives. They learn about the importance of good food and regular exercise and develop positive attitudes towards a healthy lifestyle. Students learn how bodies grow and change over time. They learn skills to play individual and team sports, and the values of sportsmanship and teamwork.

Term 1 – Personal Development – The Inside Story

Term 2 – Personal Development – Healthy and Active Lifestyles

‘You Can Do It’ – social skills – 5 keys

PSSA sport: Friday

School Sports : Friday 12:50 –1:50pm

Gymnastics: in Term 2 on Monday in the hall

PE – with Mrs Lewis

P.E. with Mrs Laura Lewis

In Stage 2, students will be engaging in Physical Education lessons with Mrs Lewis. Students will participate in one 60 minute lesson per week focusing on developing movement skills and overcoming movement challenges. Students will engage in modified games and activities, and work in teams to develop tactics and strategies. All lessons will have a strong focus on sportsmanship and overcoming challenges to develop resilience.



You Can Do It!

The You Can Do It! Program is a socio-emotional learning program that teaches students positive attitudes, socio-emotional skills and character strengths, which influence the well-being and educational achievement outcomes of learners. It allows students to practise the Five Keys, as well as the Twelve Positive Attitudes, to encourage success and happiness in all areas of their lives.

Term 1 Focus: Work Confidence, Persistence, Goal-Setting, Time Management, Teamwork

Term 2 Focus: Values, Character Strengths, Getting Along

Term 3: Resilience and Happiness

Term 4: Anxiety, Anger, Procrastination, Distractions and other learning blockages

Be Safe
Be Respectful
Be a Learner



Third Party Consent programs

Essential Assessment

Seesaw

Kahoot

Class Dojo

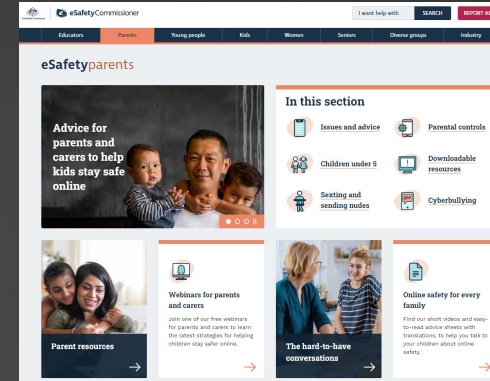
Code.org

Typing Club

Parent consent form

<https://drive.google.com/file/d/1eM74GiJWQQQ6sohuskriZS4Fx6wUdAzG/view?usp=sharing>

Cyber safety



Other Programs

Google Classroom Login using DET emails (@education.nsw.gov.au)

Reading Eggspress

Inquisitive

Amplify

Wingaru

'Acceptable Use' contract to be signed by students.

Stage 2 Extracurricular Opportunities

Dance Group (Yr 4)

Choir

Library Monitor

Peer Support – Buddy Class

SRC – class representative

Wakakirri

Spelling Bee

PSSA summer and winter

Band

Maths Olympiad

Stella Fun Club

Art Club

Debating

Public Speaking

Homework

(Consistent across all classes)

Our EHPS Homework Policy clearly states homework is optional. However, teachers will provide learning tasks that will reinforce literacy and numeracy skills as well as opportunities to provide a transfer of knowledge and content between home and school.

Regular homework content includes: reading, spelling, mathematics and physical activity.

Your child's teacher will go through the homework in more detail later.

Communication

We value the relationship we have with our parents and carers and the important role our parents and carers have in the educational journey of our students. Together we will be better able to support the learning journey of our students.

Download the free **School Enews app** to receive alerts and class messages. Open App Store, Play Store or Windows Store, search for **School Enews** and download the app .

Open the app and search for 'Eastwood Heights Public School'

Facebook:

<https://www.facebook.com/EastwoodHeightsPS/>

School email:

<https://eastwoodht-p.schools.nsw.gov.au/>

P&C - Class Parent



Eastwood Heights Public School

P&C

Association



WHAT IS THE P&C?

The P&C is a volunteer run, not for profit organisation that supports the school and is the focal point for parent participation. The P&C aims to continually better the facilities and environment of the school. Any parent or member of the community can attend meetings, and partake in decisions by becoming a P&C member for \$1.00 (one dollar). P&C Membership form & more details located on back of page.

FUNDRAISE

The P&C runs several fundraises throughout the year. This includes the Fireworks Spectacular Fundraiser. All money raised goes towards continually enhancing our school. Details on events and what to raise money for are presented at P&C meetings



PAST & FUTURE PROJECTS

Past projects the P&C has contributed funds towards include: Bus Shelter, Air Conditioning in school hall and the recent toilet block upgrade. Future projects include funding towards new K-2 and 3-6 ground equipment and a possible OOSH merger with P&C. Attend P&C meetings to hear more about these projects, become a member, and take part in the decision-making.

VOLUNTEER

Volunteering is so important – once a year, once a term, one a month, once a week – whatever you can do – it all helps!

For more info on volunteering:

- At canteen contact Nancy on 0418 418 047
- P&C Exec Committee contact Therese on 0451 011 570
- For various fundraising events, attend P&C Meetings or join the Community Facebook page, and read your *ENews* notices. Requests for volunteers will be made when needed, and a link will be published to register.

JOIN US ONLINE

P&C MEETINGS
2ND TUESDAYS OF THE MONTH*
7PM

*Exc School Holidays. Details will be communicated on the community Facebook page and via *ENews*

MORE INFO?

Email any P&C questions or feedback to president@eastwoodheightspandc.org

Class ----- Contact List 2023

Teacher: _____ Teacher email: _____

Parent Representative _____ Parent Rep Email: _____

Name of Child	Name of Parent/Caregiver	Email	Phone Number	Address	Note:

PARENT CLASS ROLES

To assist in further enhancing our collaborative learning community and to ensure smooth and effective communication, parents will be provided with an opportunity to undertake the role of Class Parent Contact and P&C Representative. This will be further discussed in the Meet the Teacher sessions during Week 5, Term 1

CLASS PARENT

The Class Parent is the liaison amongst the parents of all students in the class. They liaise with the class teacher should they wish to promote or enhance certain school or classroom matters. Traditionally, the Class Parent conducts the following:

Class Contact List

The Class Parent is provided a parent contact list from the teacher. The class parent uses this list to create a class contact and distribution list that is then distributed to every parent/carer in the class. The Class Parent will reach out to parents to check if both parents want to be listed on the contact list, and that they are happy to have their details distributed.

Communication Group

The Class Parent may create a social media group on WhatsApp for the class parents. This platform is used to clarify events, requirements and social events for students- eg play dates, birthdays etc. This is an informal chat forum to discuss school and class related matters amongst other class parents.

Teacher Gifts

Traditionally Teachers receive a class gift on occasions such as Christmas or a farewell. The Class Parent is encouraged to organise a class gift. (Platforms such as <https://www.groupstogether.com> are recommended)

Fireworks Fundraiser

All classes are assigned a stall for the Eastwood Heights Public School Fireworks Fundraiser. The Class Parent coordinates the roster and organisation for the stall. This helps distribute the load as well as builds community spirit in each class as we strive for collective success of the event.

Class Meet Ups Class meet ups are a great way to meet other parents in the class and your child's friends. The Class Parent usually organises class meet ups at the local park or similar to further foster school community and relationships.

All official school communication is sent out by 'School Enews, the school newsletter or School Bytes.

P&C REPRESENTATIVE

The EHPS Parent & Citizens Association (P&C) is a group of volunteer parents who take on a more formal role to assist the school in providing feedback on school policies and activities and raising money for additional resources to be used to enhance student learning.

The Class P&C Representative assists with the following:

Communicates on School Matters

Parents may have questions, feedback and suggestions regarding school or community matters. The P&C Representative brings these matters to the attention of the P&C

Attends Online Meetings

Where possible the P&C Representative attends online (or face-to-face) P&C Meetings on the 2nd Tuesday of the month at 7pm. The representative brings forward any matters raised. To partake in decisions the P&C Representative should become a paid P&C member, by paying a \$100 membership fee at the first general meeting.

Community & Fundraising Events

The P&C holds various community and fundraising events throughout the year. Some include:

- the Welcome Back BBQ.
- Mothers / Father's Day Stalls and breakfasts.
- Fireworks Fundraiser and Election Day BBQ's.

For more information on the P&C see following page.

Join the 'Eastwood Heights Public School Community' Facebook page for informal school community discussions and messages



Thank you for helping us continue to thrive and succeed as a school!

School Map

We thank you for taking the time to attend our Stage Meet the Teacher session, and look forward to our partnership in ensuring our students attain their personal best in 2024.



Classroom Visit

Teachers will now outline their:

- Timetables
- Classroom procedures
- Reward systems
- Nominate Class Parent
- Question time

(No individual student information will be discussed.)

Thank you for attending :)

It is now time to move to classrooms.